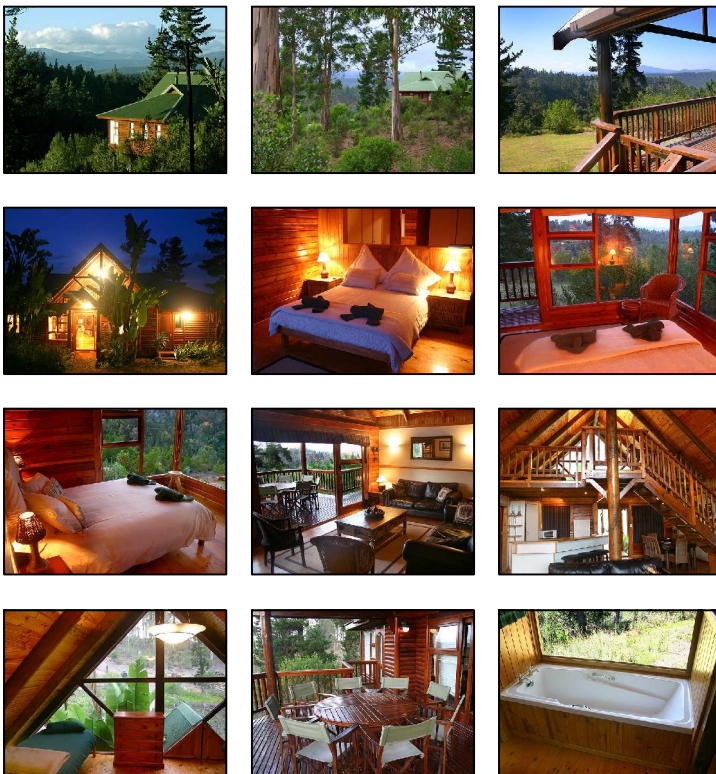




Phantom River View



Lulama ★★★★★

Sleeps a total of **8 people**

- 1 Room with queen bed**
- 1 Room with double bed**
- 1 Room with 2 single beds**
- 1 Loft with 2 single beds**
- 2 Bathrooms with bath and shower**

- * Braai / Barbeque
- * Weber
- * Indoor Fireplace
- * Satellite TV
- * DVD & CD Player
- * Dishwasher
- * Microwave
- * Washing Machine
- * Travel Cot

Set in a pine paradise, **Lulama** is a hidden gem amongst self-catering accommodation options. You'll love your stay and we guarantee you'll want to return time and time again to rejuvenate mind, body and spirit in this nature-lovers escape.

You'll easily be able to share the beauty of Lulama with friends and family as this spacious three-bedroom cabin is able to **sleep up to 8 people**. Stretch out on the queen size bed in the main bedroom and enjoy the forest views from large picture windows. Or indulge in a bubble bath in the en-suite bathroom, complete with shower, and soak in the views.

The main bedroom and second bedroom, with a double bed, both have private entrances onto the outside deck. Step outside and let your eyes wander over the endless scenery.

The third bedroom and loft bedroom each have two single beds and guests staying in either of these rooms can make use of the full, second bathroom with both a bath and shower.

The warm finishes in the lounge invite you to curl up with a book, especially if the log fire is crackling in the background. Comfortable leather couches look out over on to a wooden deck, with the ever-present forest creating a picture-perfect backdrop. An ideal setting for sundowners or a tasty meal.

And speaking of food – you can choose to cook indoors, where a **kitchen equipped with every convenience**, including a dishwasher and washing machine await you, or you can choose to light a fire, cook outdoors and enjoy the magnificent surroundings every moment of your stay.

PLEASE NOTE: General Information

- » Check in time: 14:00
- » Check out time: 10:00
- » Fresh linen and towels provided.
- » Tea, coffee and sugar provided.
- » You need to supply your own food, drinks and firewood/charcoal.
- » No pets allowed.
- » No cleaning service. Only available after 7 nights or more.